

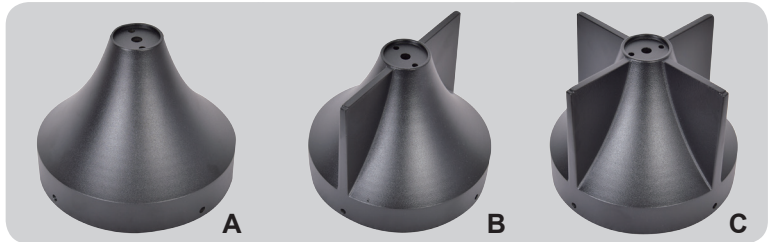
DLG-LED-056



A

B

C

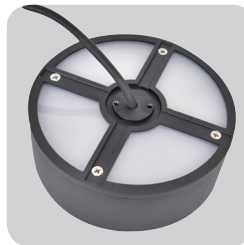


A

B

C

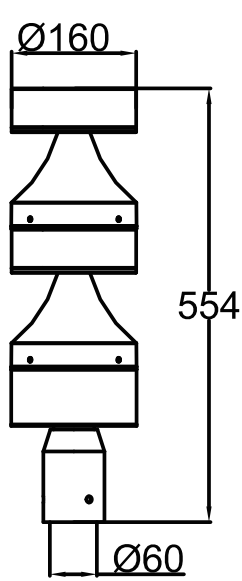
Die casting reflector



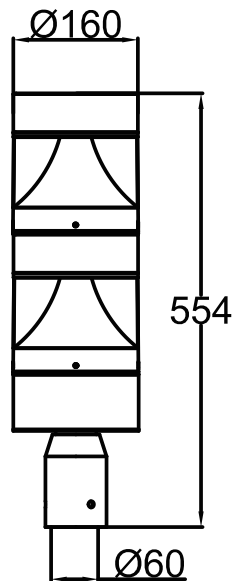
Die casting heatsink

Opal PC diffuser

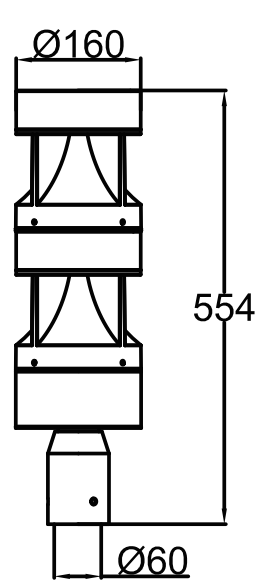
Frosted PC diffuser



A



B



C

Application:



Walkways



Parks and Gardens



Car parks



Prestigious

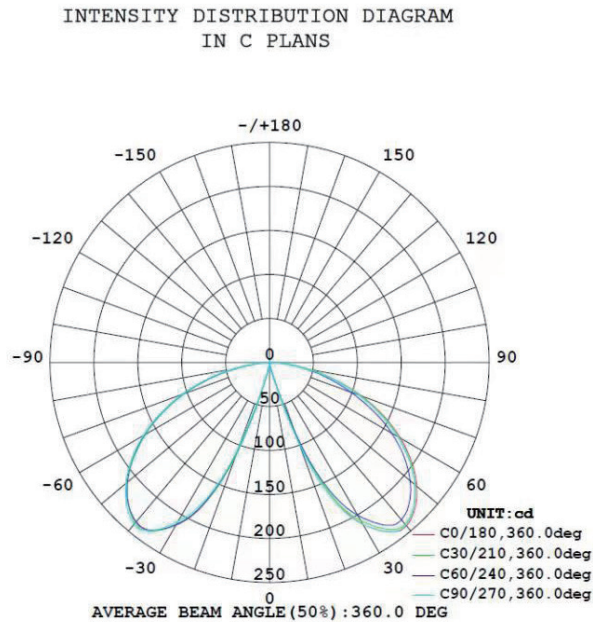


Retail



Amenity

Distribution:



Features:

- Main body is made of Die-casting aluminum alloy with Extruded aluminum alloy.
- The diffuser is a opal or frosted anti-UV polycarbonate for high efficiency and vandal resistance.
- Lumileds 2835 led chip and Tridonic driver as regular, Sosen, Meanwell, Philips driver options.
- Easy access to LED and driver via a removable head.
- 2700-6500K color temperature options.
- Tamper proof fixings for increased vandal resistance.
- Anti-UV electrostatic powder spraying, regular color: Black, Silver, RAL7043, RAL7016
- IP65 rating water and rust proof protection.
- IK08 rating housing protection.
- Warranty is 3-5 years.

Specification:

Item No.	LED	Lumens	Wattage	CCT	CRI
DLW-LED-052-20W	Lumileds 2835	995LM	20W	2700-6500K	Ra≥80
DLW-LED-052-24W	Lumileds 2835	1180LM	24W	2700-6500K	Ra≥80
DLW-LED-052-30W	Lumileds 2835	1491LM	30W	2700-6500K	Ra≥80
DLW-LED-052-40W	Lumileds 2835	2160LM	40W	2700-6500K	Ra≥80
DLW-LED-052-50W	Lumileds 2835	2700LM	50W	2700-6500K	Ra≥80
DLW-LED-052-60W	Lumileds 2835	3240LM	60W	2700-6500K	Ra≥80